

## 1000mg Strawberry Full Spectrum AM Tincture (Lot 556)



**CBD Lion**  
750 Tower Rd Suite B  
Mundelein, Illinois 60060  
(833) 223-2329



**Order ID#:** 20210315-693  
**Lab code#:** LC-20210315-1738  
**Product type:** Tincture  
**Unit amt. (mL):** 30  
**Lot number:** 556  
**Batch number:** 2147

**Sample date:** 15-Mar-2021  
**Date received:** 18-Mar-2021  
**Completed:** 19-Mar-2021  
**Report expires:** 19-Mar-2022

### CANNABINOIDS

**Analysis Batch:** WO-21031813  
**Analysis Date:** Thursday, March 18, 2021

**Test Method:** SOP 6.6  
**Instrument:** Agilent HPLC, Instrument 33

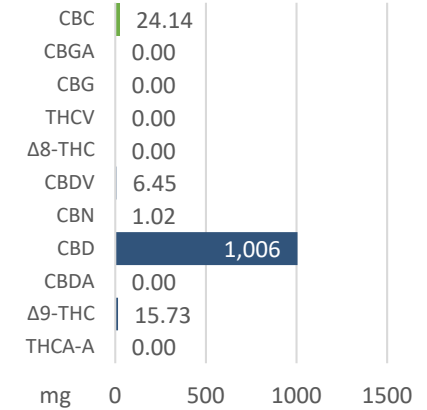
Analyte	% <sup>a</sup>	mg/mL	mg/unit
THCA-A	ND	ND	ND
Δ9-THC	0.0524	0.5243	15.73
CBDA	ND	ND	ND
CBD	3.35	33.54	1006
CBN	0.0034	0.03404	1.021
CBDV	0.0215	0.2151	6.452
Δ8-THC	ND	ND	ND
THCV	ND	ND	ND
CBG	ND	ND	ND
CBGA	ND	ND	ND
CBC	0.0805	0.8047	24.14
<b>Total:</b>	<b>3.51</b>	<b>35.12</b>	<b>1054</b>

**Total THC<sup>b</sup>**  
0.052%  
**Pass**

**Total CBD<sup>c</sup>**  
1006 mg

**TOTAL<sup>d</sup>**  
1054 mg

### Profile (mg/unit)



<sup>a</sup> Detection Level = 0.0008% by weight.

<sup>b</sup> Total THC is calculated as %THC + (%THCA × 0.877).

<sup>c</sup> CBD is calculated as CBD + (CBDA × 0.877).

<sup>d</sup> The absolute sum of all cannabinoids above the level of detection.

### Comments:

None.

### Authorization



Steven Perez, Laboratory Director

Approval Date: 19-Mar-2021

Test results are based solely upon the test article submitted to Americanna Laboratories, LLC in the condition it was received. Americanna Laboratories, LLC warrants that all analytical work was conducted in a professional manner in accordance with the requirements of ISO/IEC 17025:2017, such as comparison to Certified Reference Materials and NIST traceable Reference Standards. This report shall not be reproduced, except in its entirety, without the written approval of Americanna Laboratories, LLC. Test results are confidential unless explicitly waived. Void after 1 year from test end date.

ND=Not Detected, NT=Not Tested, ppm=Parts Per Million, ppb=Parts Per Billion. Limit of Detection (LOD) and Limit of Quantitation (LOQ) are terms used to describe the smallest concentration that can be reliably measured by an analytical procedure.

- end of report -